

Cocedor de pasta eléctrico “Gama Snack”

CP-40(40SECP)

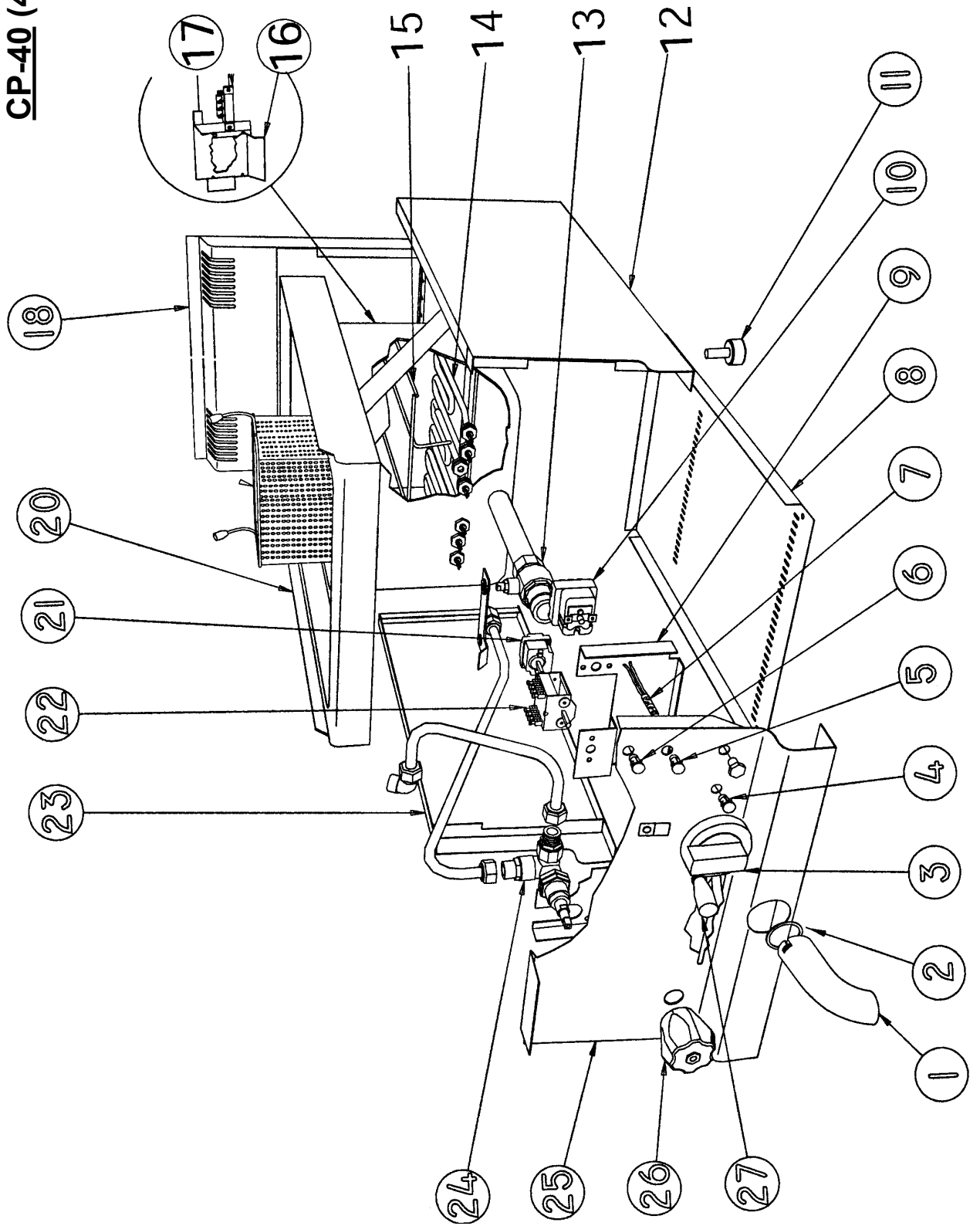
Lista de Piezas de Recambio



Franke Food
Services Equipment
Telf. 902 240 021
www.frankehosteleria.com

FRANKE

CP-40 (40SECP)



CP-40 (40SECP)

| <u>Pos</u> | <u>Código</u> | <u>Denominación</u> | <u>Cant.</u> |
|------------|---------------|-------------------------------------|--------------|
| 1 | 8217500 | Prolongación desagüe | 1 |
| 2 | | Anillo 8217550 | 1 |
| 3 | 5343842 | Mando CP-40 8215333 | 1 |
| 4 | 5343172 | Lentilla blanca A039207 | 1 |
| 5 | 5343161 | Lentilla verde A038507 | 1 |
| 6 | 5343175 | Lentilla roja A038907 | 1 |
| 7 | 5343150 | Lámpara piloto 380V A038506 | 3 |
| 8 | | Fondo inferior 8235100 | 1 |
| 9 | | Refuerzo posterior panel de control | 1 |
| 10 | 5343733 | Termostato A049405 | 1 |
| 11 | 5343434 | Pie A029707 | 4 |
| 12 | | Panel lateral derecho 8200100 | 1 |
| 13 | | Válvula corredera A023020 | 1 |
| 14 | 5343117 | Resistencia 7,5 Kw CP-40 | 1 |
| 15 | | Parrilla 8235000 | 1 |
| 16 | | Escuadra 8235400 | 1 |
| 17 | | Tablero de bornes A036204 | 1 |
| 18 | | Fondo posterior 8235200 | 1 |
| 20 | | Plano de la cuba 8203500 | 1 |
| 21 | 5343729 | Termostato 30-110 3P A046240 | 1 |
| 22 | 5343489 | Conmutador de termostato A046001 | 1 |
| 23 | | Panel lateral izquierdo 8200200 | 1 |
| 24 | | Grifo A022411 | 1 |
| 25 | | Panel de mandos 8206100 | 1 |
| 26 | 5343845 | Mando A022453 | 1 |
| 27 | 5343740 | Maneta de vaciado M6 A019302 | 1 |